



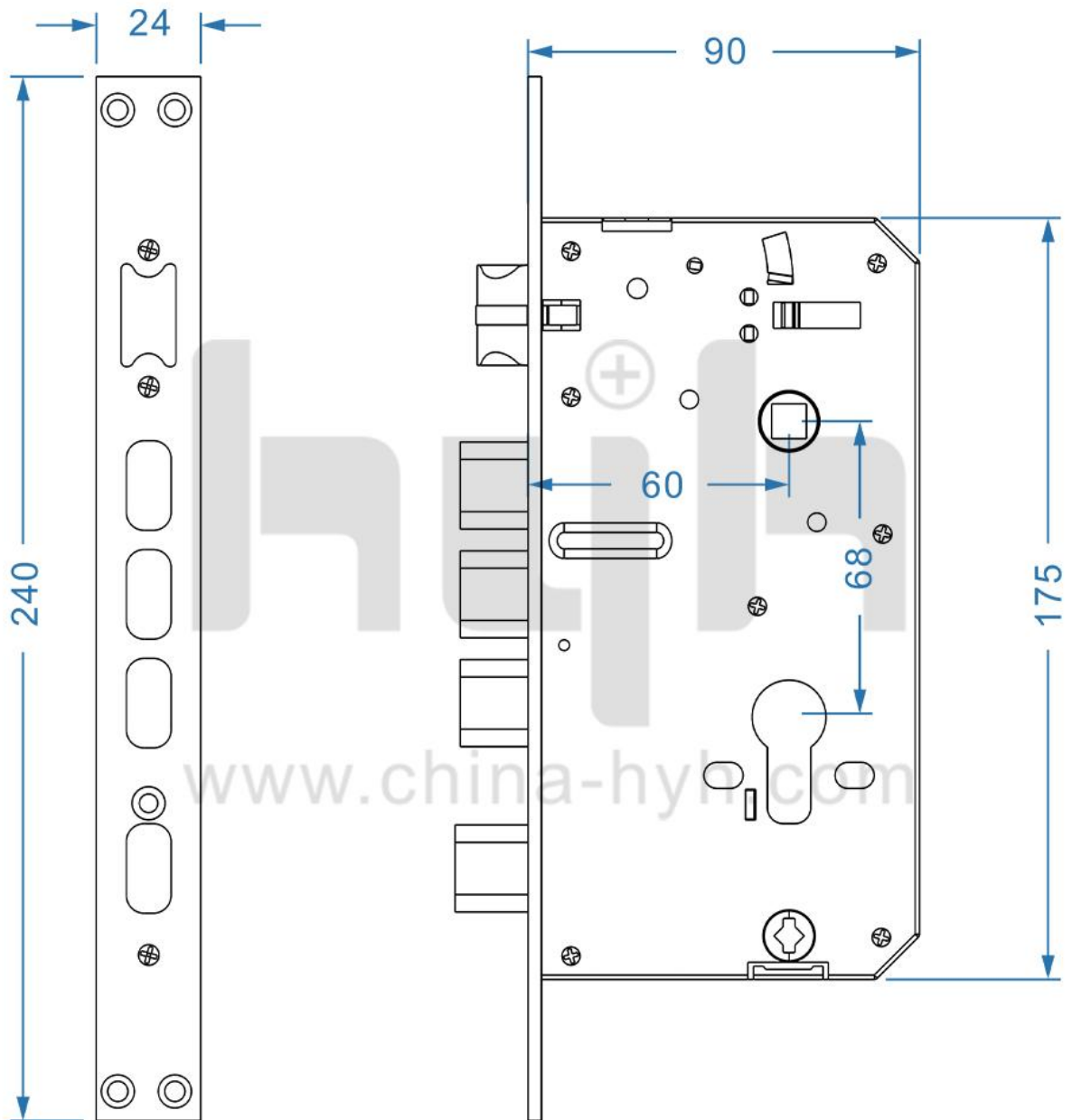
V2 Instruction



INNOVATION NEVER STOPS



INNOVATION NEVER STOPS



INNOVATION NEVER STOPS

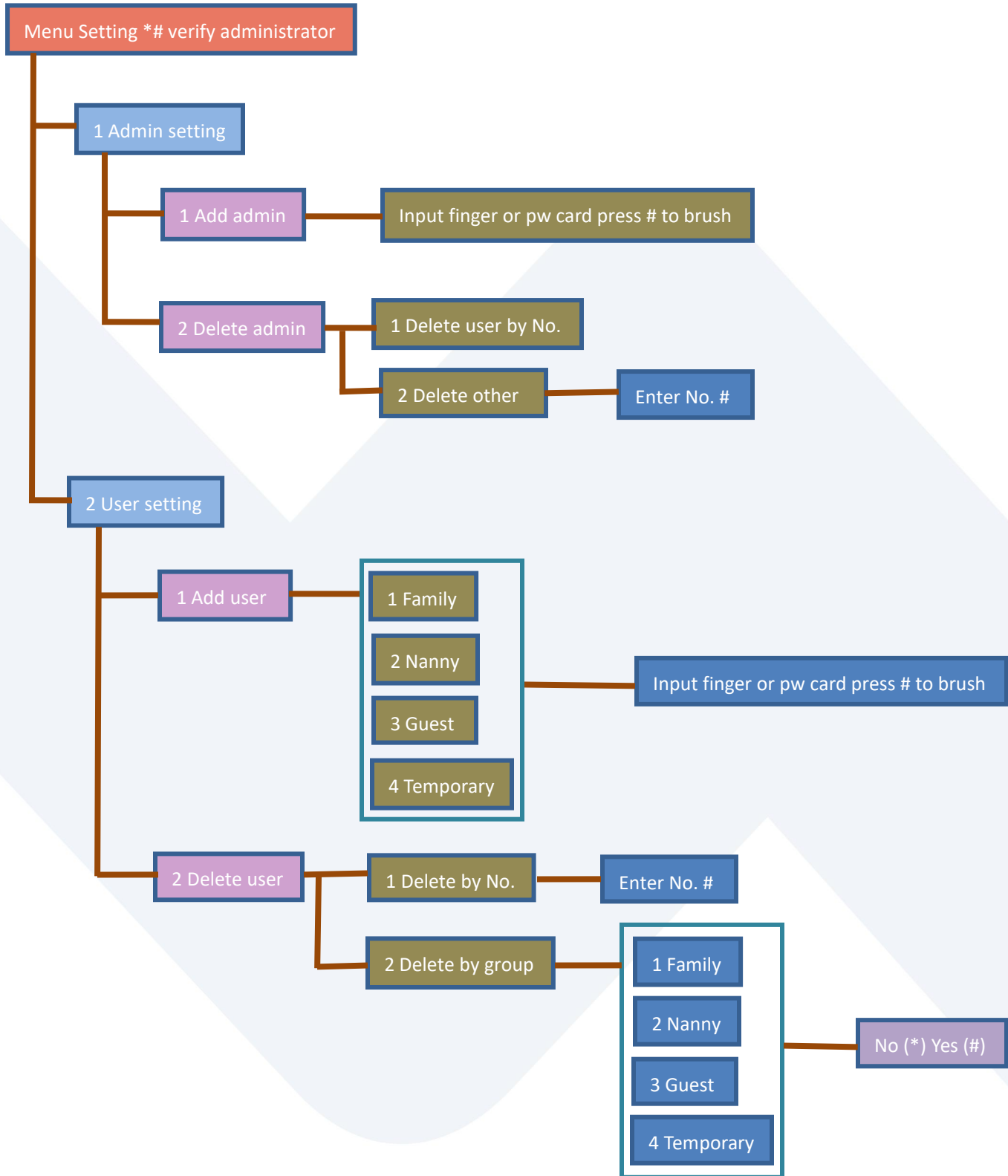


SPECIFICATIONS

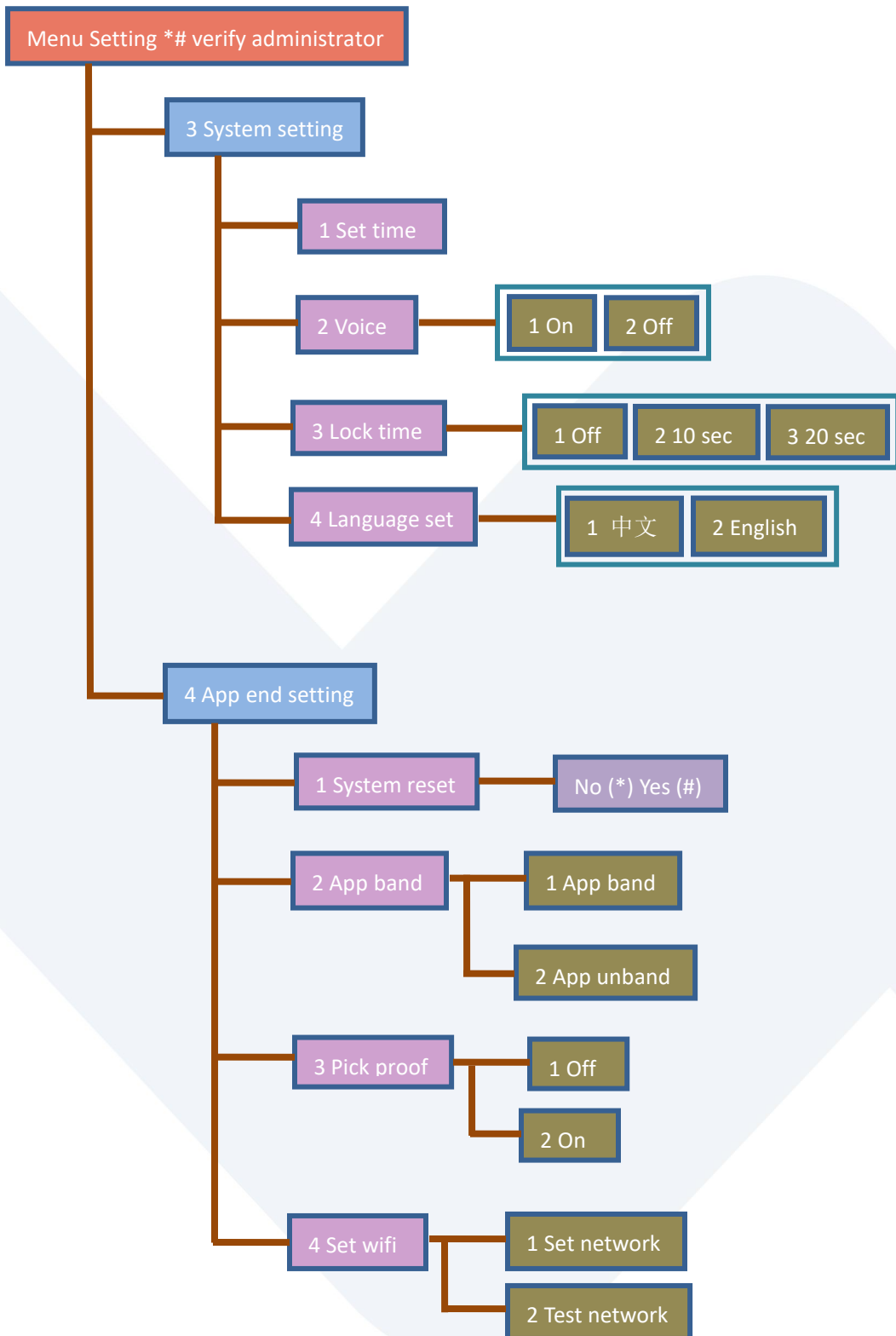
Item Code	HC-V2
Material	Aluminum alloy
Size	Front panel 420*76mm, Back panel 415*73mm
Battery	4200mA lithium battery
Suitable for Mortise	6068 Lock Body
Network	Wifi
Unlocking Way	Face+Fingerprint+Password+Tuya+Card+Key
Camera	2 million pixels HD lens, face cap
Fingerprint Sensor	Semiconductor, 160 pixels, up to 100 pieces of fingerprint
Screen	4.5 inch HD screen
Alarm	Tamper alarm, Low battery alarm, Wrong-try lockout
Power back up	Type C USB Charge
Certificate	CE, RoHS, FCC
Suitable Door Thickness	40-100mm
Reset	Enter*#administrator verify#41#

INNOVATION NEVER STOPS

OPERATION



INNOVATION NEVER STOPS



INNOVATION NEVER STOPS

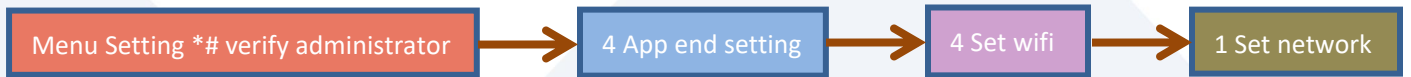


APP SETTING

Search Tuya Smart in app store or scan the QR code, register an account and login.

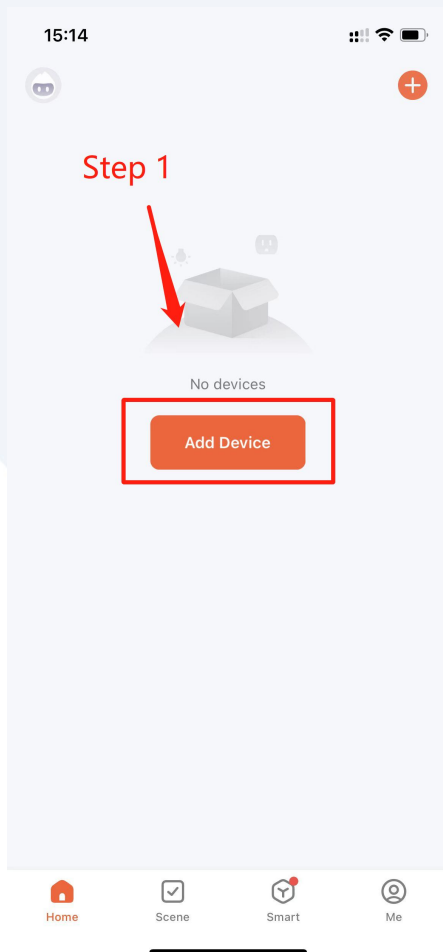


Before attempting to connect to the app, set the lock to wait for connecting:



Then please follow setting steps below:

Step 1: Add Device

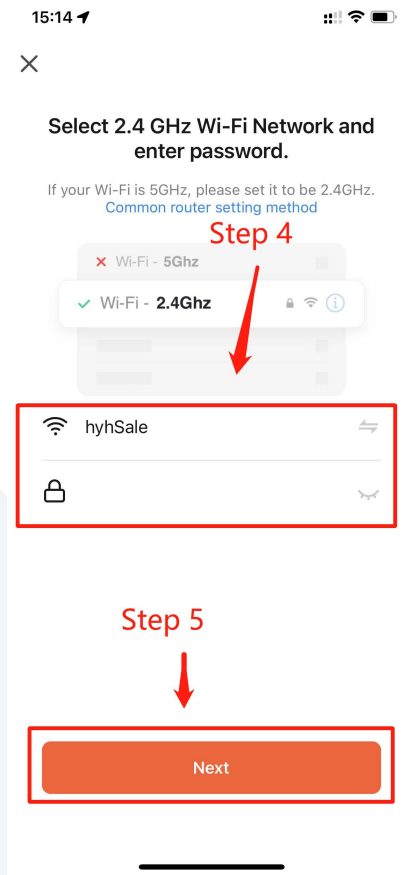


Step 2&3: Choose **Security&Video**, and then choose **Lock (Wi-Fi)**

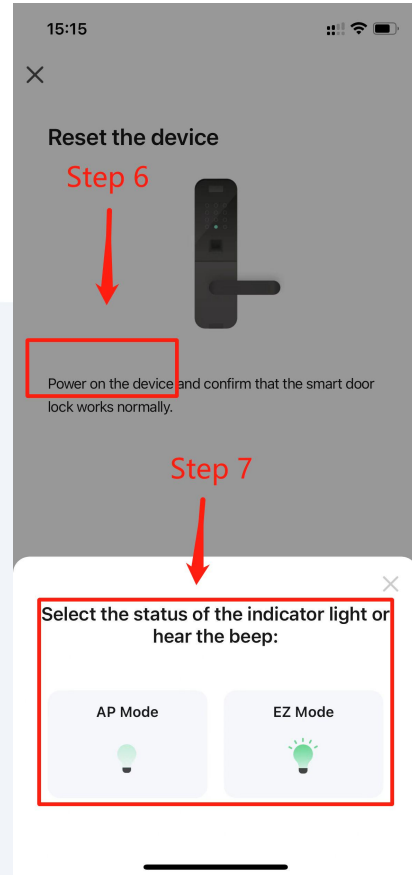


INNOVATION NEVER STOPS

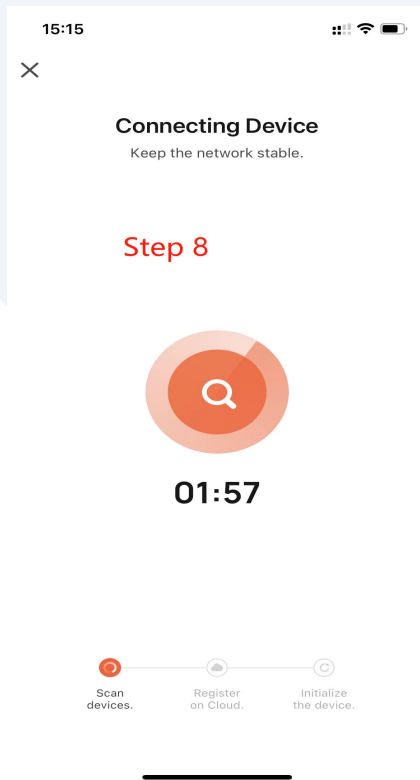
Step 4&5: Connect the available Wi-Fi and click **Next**



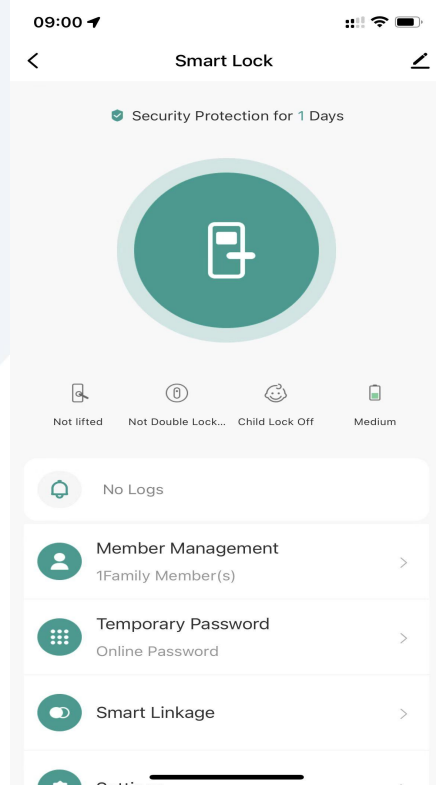
Step 6&7: Touch the lock screen to wake up the lock and ensure the Wi-Fi signal is good, click **Next**



Step 8: Wait for connecting



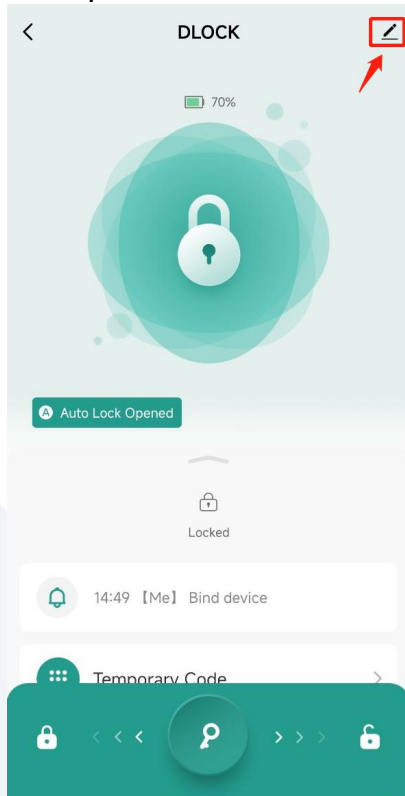
Step 9: Adding device successfully.



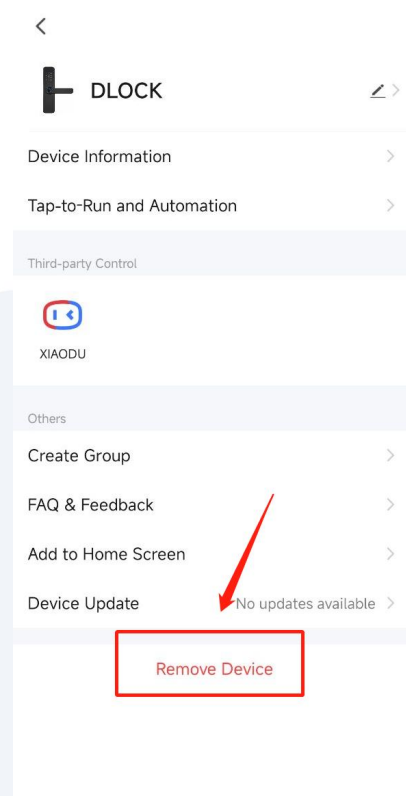
INNOVATION NEVER STOPS

Remove App

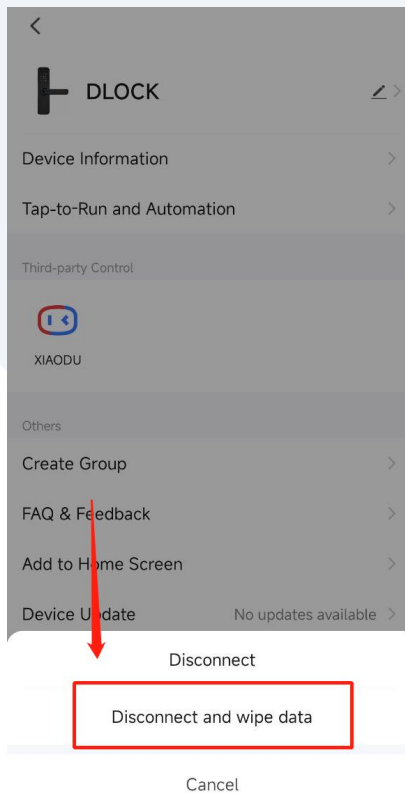
Step 1: Click the icon



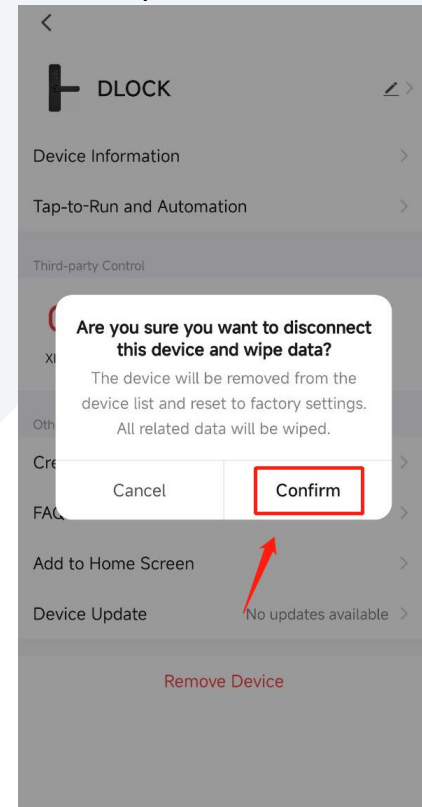
Step 2: Choose remove device



Step 3: Choose disconnect and wipe data



Step 4: Confirm



INNOVATION NEVER STOPS